

## Product Information Sheet



### Product Name

## Comfort Roll 35

A high performance insulation roll that saves space and increases thermal insulation performance. Soft tissue face for easy handling with gridlines to aid installation.

ISOVER G3 Touch – all our mineral wool products are manufactured using G3 Touch technology. High performance mineral wool insulation, naturally strong & gentle - made from recycled materials.





# Comfort Roll 35



W/mK 0.035

## BENEFITS AND FEATURES

|                                  |   |
|----------------------------------|---|
| <b>THERMAL</b>                   | Conductivity 0.035 W/mK.  |
| <b>ACOUSTIC</b>                  | Excellent Acoustic Performance - helps to substantially reduce rain, wind and traffic noise to provide increased levels of acoustic comfort within a home |
| <b>FIRE</b>                      | Excellent Fire Safety   |
| <b>MOISTURE</b>                  | Vapour permeable breathable insulation. Improves energy performance and reduces heating & cooling costs.  |
| <b>STRENGTH</b>                  | Excellent Recovery and strength.  |
| <b>EASY TO INSTALL</b>           | Friction fits between studs. Easy to install.   |
| <b>ENVIRONMENTAL CREDENTIALS</b> | Made from recycled glass. Minimal manufacturing and on-site wastage. Low carbon footprint at manufacture and during transport.                            |

## STANDARDS & CERTIFICATION

|                           |   |
|---------------------------|---|
| <b>QUALITY</b>            | We hold a Quality Management Standard BS EN ISO 9001: 2008 for manufacturing.   |
| <b>CE</b>                 | All products are manufactured in accordance with the CE marking requirements under the Construction Products Regulation,  |
| <b>PRODUCT STANDARDS</b>  | All our products are manufactured in accordance with product standard: BS EN 13162: 2008 and BS EN 13172 Evaluation of Conformity.  |
| <b>ENVIRONMENT</b>        | ISOVER is an ISO 14001:2004 (Environmental Management System) accredited manufacturing facility. This accreditation ensures that all products are manufactured to the stringent standards set out by this management system. EN ISO 13162 EMS 551706 003 BS EN ISO 9001: 2000   |
| <b>INDOOR AIR QUALITY</b> | Awarded the highest standard in indoor air quality - Eurofins "Gold" Label<br><br>The Gold Certificate means that ISOVER mineral wool is certified as an outstanding material in terms of Indoor Air Quality emissions regulations.   |
| <b>DURABILITY</b>         | Thermal conductivity of mineral wool products does not change with time, experience has shown the fibre structure to be stable and the porosity contains no other gases than atmospheric air. (See std EN13162:2012 Annex ZA, Table ZA.1) Will not accelerate corrosion with steel, copper or aluminium. Will not sustain vermin, nor breed or promote fungi or bacteria. |



## Variants

|                          | Thickness (mm) | Width (mm) | Length (mm) | Pack Area (m2) | Pack per pallet |
|--------------------------|----------------|------------|-------------|----------------|-----------------|
| Comfort Roll 35 G3 Touch | 80             | 1200       | 5300        | 6.36           | 24              |
| Comfort Roll 35 G3 Touch | 100            | 1200       | 4500        | 5.40           | 24              |
| Comfort Roll 35 G3 Touch | 140            | 1200       | 3400        | 4.08           | 24              |
| Heatshield G3 Touch      | 200            | 1200       | 2200        | 2.64           | 24              |



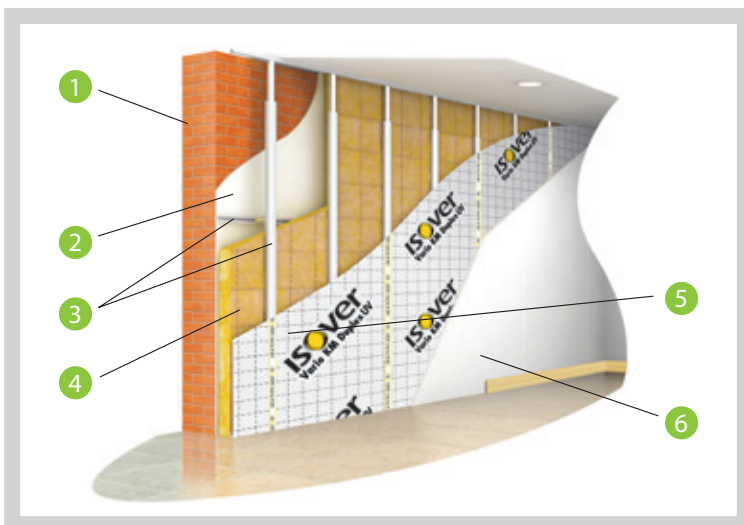
# Comfort Roll 35 Applications

## Pitched Roof Counter Battens

| INSULATION 1ST LAYER | insulation 2nd Layer | Airtightness and Moisture Control | Board Lining            | U-Value W/m2K |
|----------------------|----------------------|-----------------------------------|-------------------------|---------------|
| 200mm Comfort 35     | 50mm Metac           | Vario membrane + tapes            | 12.5mm Gyproc WallBoard | 0.15          |

## Masonry Drylining Hollow Block

| INSULATION       | U value W/m2K | Total thickness of drylining system (mm) |
|------------------|---------------|--|
| 80mm Comfort 35  | 0.28          | 112.5                                    |
| 100mm Comfort 35 | 0.34          | 132.5                                    |
| 140mm Comfort 35 | 0.21          | 172.5                                    |



## Masonry

### Dry Lining Single Brick Construction

- 1 215 mm brick
- 2 13mm Gyproc Plaster
- 3 Optima metal studs + fixings
- 4 ISOVER insulation
- 5 Vario membrane + tapes placed on studs
- 6 Gyproc WallBoard

## Masonry Drylining Partial Fill

| INSULATION      | U value W/m2K | Total thickness of drylining system (mm) |
|-----------------|---------------|--|
| 80mm Comfort 35 | 0.22          | 112.5                                    |

## Masonry Drylining Concrete Wall

| INSULATION       | U value W/m2K | Total thickness of drylining system (mm) |
|------------------|---------------|--|
| 100mm Comfort 35 | 0.28          | 132.5                                    |
| 140mm Comfort 35 | 0.21          | 172.5                                    |

## Masonry Drylining Single Brick Construction

| INSULATION       | U value W/m2K | Total thickness of drylining system (mm) |
|------------------|---------------|--|
| 80mm Comfort 35  | 0.33          | 112.5                                    |
| 100mm Comfort 35 | 0.28          | 132.5                                    |
| 140mm Comfort 35 | 0.21          | 172.5                                    |

## Timber Frame Insulation Between Studs

| INSULATION       | Airtightness/ Moisture Control | Board Lining            | U-value W/m2K |
|------------------|--------------------------------|-------------------------|---------------|
| 140mm Comfort 35 | Vario membrane + tapes         | 12.5mm Gyproc WallBoard | 0.28          |

For more applications and product details, please visit [www.isover.ie](http://www.isover.ie)

### Timber Frame Drying Timber Frame Walls

| INSULATION TIMBER STUDS | Insulation in Optima | Airtightness and Moisture Control | Board Lining            | U-Value W/m <sup>2</sup> K |
|-------------------------|----------------------|-----------------------------------|-------------------------|----------------------------|
| 150mm Metac             | 60mm Comfort 32      | Vario membrane + tapes            | 12.5mm Gyproc WallBoard | 0.17                       |

### Timber Frame Insulation Between Studs And Couter Batten

| INSULATION       | Insulation in counter batten | Airtightness/ Moisture Control | Board Lining            | U-value W/m <sup>2</sup> K |
|------------------|------------------------------|--------------------------------|-------------------------|----------------------------|
| 140mm Comfort 35 | 50 mm Metac                  | Vario membrane + tapes         | 12.5mm Gyproc WallBoard | 0.21                       |

### Timber Frame Drying Timber Frame Walls

| INSULATION TIMBER STUDS | Insulation in counter batten | Airtightness/ Moisture Control | Board Lining            | U-value W/m <sup>2</sup> K |
|-------------------------|------------------------------|--------------------------------|-------------------------|----------------------------|
| 150mm Metac             | 80mm Comfort 35              | Vario membrane + tapes         | 12.5mm Gyproc WallBoard | 0.16                       |

ISOVER Ireland  
Unit 4, Kilcarbery Business Park,  
Nangor Rd., Dublin 22  
Tel: +353 (0) 1 629 8400  
Email: [info@isover.ie](mailto:info@isover.ie)  
Web: [www.isover.ie](http://www.isover.ie)

ISOVER Technical Team  
ROI Free Phone: 1800 744 480  
NI Phone: 0845 399 0159  
Email: [tech.ie@saint-gobain.com](mailto:tech.ie@saint-gobain.com)

