

FIREPRO[®] **INTUMESCENT** **PUTTY PADS**

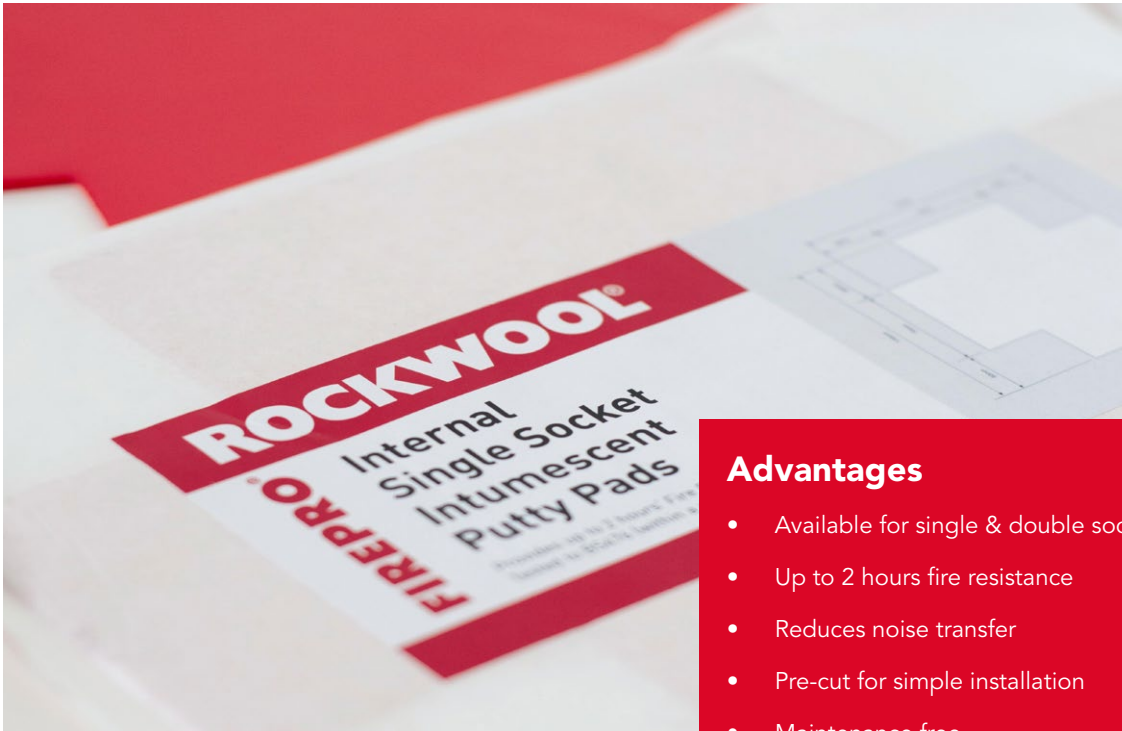
Restrict the spread of fire in plasterboard partitions



FIREPRO® INTUMESCENT PUTTY PADS

ROCKWOOL Intumescent Putty Pads have been developed for use in plasterboard partitions that have been partially penetrated by electrical socket boxes.

They are designed to maintain acoustic integrity and fire resistance.



Advantages

- Available for single & double sockets
- Up to 2 hours fire resistance
- Reduces noise transfer
- Pre-cut for simple installation
- Maintenance free

Description

Intumescent Putty Pads are manufactured from a red non-setting, flexible silicone based intumescent polymer. They will not harden, crack or dry out with age.

The intumescent properties activate as temperatures reach 200°C, restricting the passage of fire and smoke.

External socket Intumescent Putty Pads provide a fast, efficient and clean method of achieving the required fire and acoustic ratings as specified in the 2006 edition of the Building Regulations approved document part E and B, sections 7 and 7.12 b.

Applications

Intumescent Putty Pads are designed for (but not limited to) effecting a fire and acoustic seal around plastic or metal electrical socket boxes. Using the putty pads removes the need to install time-consuming baffle boxes.

Under fire conditions the intumescent pad expands to fill the void left by the burnt out electrical socket box, preventing the spread of fire through the plasterboard wall. The intumescent putty can also be used for upgrading the acoustic performance of partitions where electrical sockets boxes have penetrated the wall, reducing room-to-room noise transfer.



Performance

Fire performance

Tested to BS 476 Part 20:1987/EN1366-3, Acoustic Intumescent Putty Pads offer up to 2 hour fire resistance.

Acoustic performance

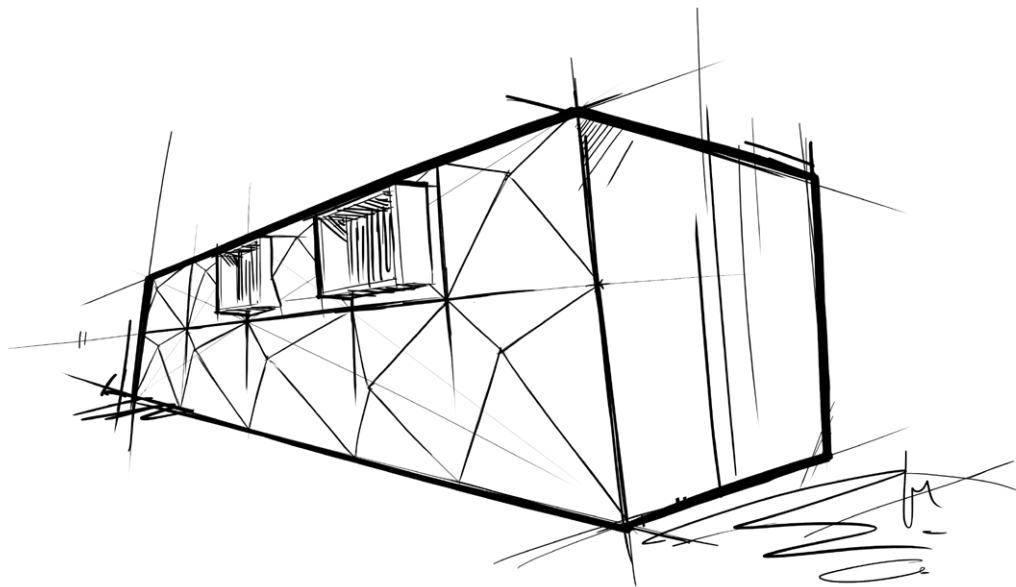
Measurement of airborne sound insulation was made in accordance with BS EN ISO 140-3:1995. Single number quantities were calculated in accordance with BS EN ISO 717-1:1997.

Intumescent Putty Pads (Internal socket) offer a weighted sound reduction index of up to 67db. Tests were conducted by BRE Acoustics who hold UKAS accreditation for the measurement of sound insulation in the field and the laboratory. The measurements were conducted using the procedures accredited by UKAS.

Technical information

Product Information

Property	Description
Suitable socket size	Single & Double Gang
Suitable socket type	Internally & Externally Mounted
Activation temperature	200°C
Application temperature	0°C to 40°C
Acoustic performance	Up to 67 dB
Shelf life	Up to 24 months
Fire resistance	Up to 2 hours



Installation

1. Remove the socket plate.
2. To ensure a high-quality seal, ensure the socket box is clean, dry and free from any dirt and dust.
3. Remove the protective paper from one side of the pad and align the pad so that it fits centrally over the switchbox. (can be installed to either the inside or the outside of the socket, depending on the fitting method / type of socket).
4. Firmly press and mould the pre-formed putty pad into the back of the box and around the cables ensuring the pad perimeter is sufficiently bonded.
5. Remove the remaining protective paper and trim off any excess material to leave a neat finish.
6. Replace and secure the socket plate.



Figure 1

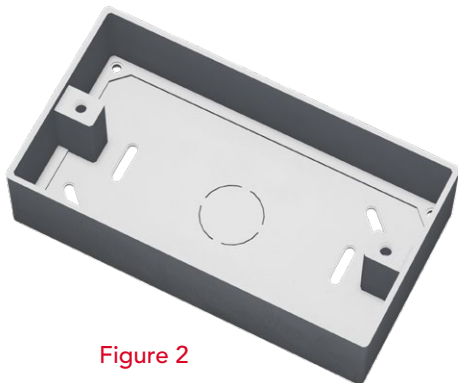


Figure 2



Figure 3

Specification clauses

FIREPRO Intumescent Putt Pads are associated with the following NBS Clause:

P12 Fire stopping systems

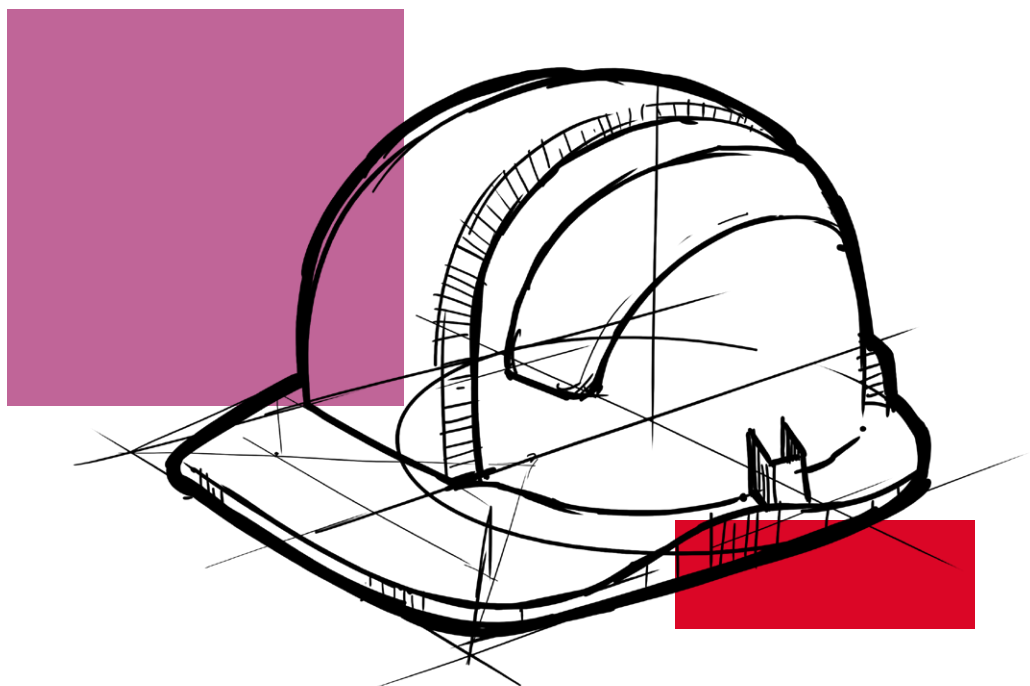
- 350 Intumescent Putty

Disclaimers

This product should only be utilised for applications as outlined in the relevant ROCKWOOL product datasheet and in accordance with the relevant ROCKWOOL Fire Resistance Testing. Additionally, the product must be installed in accordance with the current ROCKWOOL guidelines. For further information please visit www.rockwool.co.uk or contact our Technical Solutions Team on 01656 868490.

Supporting Information

For further information relating to any aspect of the FirePro range, please refer to the applicable ROCKWOOL standard details at www.rockwool.co.uk or contact the ROCKWOOL technical solution team on 01656 868490 or technical.solutions@rockwool.co.uk.



Sustainability

As an environmentally conscious company, ROCKWOOL promotes the sustainable production and use of insulation and is committed to a continuous process of environmental improvement.

Health & Safety

A Material Safety Data Sheet is available and can be downloaded from www.rockwool.co.uk to assist in the preparation of risk assessments, as required by the Control of Substances Hazardous to Health Regulations (COSHH).



Fire resistance



Acoustic comfort

Interested?

For further information, contact the Technical Solutions Team on 01656 868490 or email technical.solutions@rockwool.co.uk

Visit www.rockwool.co.uk to view our complete range of products and services.

Copyright ROCKWOOL January 2019.

The ROCKWOOL Trademark

ROCKWOOL® - our trademark

The ROCKWOOL trademark was initially registered in Denmark as a logo mark back in 1936. In 1937, it was accompanied with a word mark registration; a registration which is now extended to more than 60 countries around the world.

The ROCKWOOL trademark is one of the largest assets in the ROCKWOOL Group, and thus well protected and defended by us throughout the world.

If you require permission to use the ROCKWOOL logo for your business, advertising or promotion. You must apply for a Trade Mark Usage Agreement. To apply, write to:
marketcom@rockwool.com.

Trademarks

The following are registered trademarks of the ROCKWOOL Group:

ROCKWOOL®

ROCKCLOSE®

RAINSCREEN DUO SLAB®

HARDROCK®

ROCKFLOOR®

FLEXI®

BEAMCLAD®

FIREPRO®

Disclaimer

ROCKWOOL Limited reserves the right to alter or amend the specification of products without notice as our policy is one of constant improvement. The information contained in this brochure is believed to be correct at the date of publication. Whilst ROCKWOOL will endeavour to keep its publications up to date, readers will appreciate that between publications there may be pertinent changes in the law, or other developments affecting the accuracy of the information contained in this brochure. The applications referred to within the brochure do not necessarily represent an exhaustive list of applications. ROCKWOOL Limited does not accept responsibility for the consequences of using ROCKWOOL in applications different from those described within this brochure. Expert advice should be sought where such different applications are contemplated, or where the extent of any listed application is in doubt.

© ROCKWOOL 2018. All rights reserved.

Photography and Illustrations

The product illustrations are the property of ROCKWOOL Ltd and have been created for indicative purposes only.

Unless indicated below, the photography and illustrations used in this guide are the property of ROCKWOOL Limited. We reserve all rights to the usage of these images.

If you require permission to use ROCKWOOL images, you must apply for a Usage Agreement. To apply, write to:
marketcom@rockwool.com.

Notes

Notes

Notes

January 2019

ROCKWOOL Limited

Pencoed
Bridgend
CF35 6NY

Tel: 01656 862 621

info@rockwool.co.uk

rockwool.co.uk

