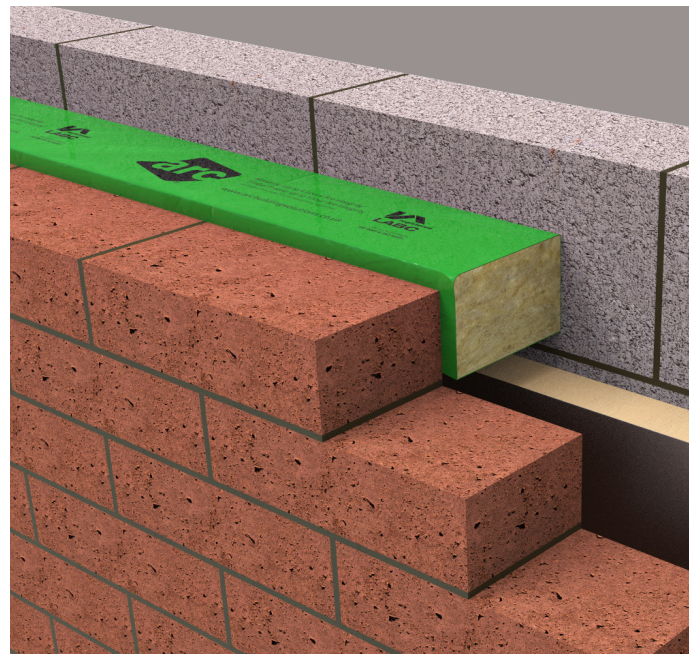




CAVITY STOP SOCK

Cavity fire barrier for masonry construction

- » Up to 4 hours fire integrity
- » Horizontal and vertical options
- » Specified in terraced, semi-detached, apartments and major projects
- » Meets requirements of Robust Detail Part E and Approved Document B
- » Maximum cavity width available: 300mm
- » Easily installed with compression fit; no mechanical fix is required
- » Third-party certificated by Certifire



CAVITY STOP SOCK



Application

ARC Cavity Stop Sock restricts the spread of smoke and flames within the cavity of external masonry walls. It is ideally suited for providing a cavity barrier within the external wall cavity, in line with a separating wall or floor as specified in Approved Document B, and for closing the cavity at eaves level.

Installation

ARC Cavity Stop Sock is designed to be simply compression fitted as the brick and block work progresses. No mechanical fixing is required, with the compression fit holding the barrier in place.

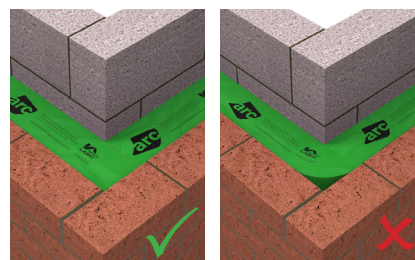
The barrier must fully fill the cavity from external brick to internal block. Any cavity insulation must be cut back at the location of the barrier, and care must be taken to ensure that the built cavity width is accurate and that the size of barrier fitted is appropriate to this.

- » Vertical application: we recommend building up the internal block work first. Then progress several courses of brickwork, before installing the barrier. The brickwork can continue, building the barrier in. Care must be taken to ensure the correct compression fit is achieved.
- » Horizontal application: build the brickwork up to the level the barrier will be installed, ensuring the width of the cavity is correct. Allow the brickwork to set, before push fitting the barrier in to place and under the correct compression.
- » At the end of a run, or at a corner, lengths of barrier should be cut to the required length, and then tightly butt jointed ensuring no gaps remain.
- » The polythene encapsulation does not contribute to the performance of the barrier, but offers weather protection and product identification. We recommend that it is left in place for these purposes, however if it becomes torn or damaged there is no cause for concern.
- » You should not attempt to squash the barrier before installation. Although this can make the barrier easier to fit, it is likely to cause gaps and may damage the barrier, resulting in reduced performance.

What does good look like?



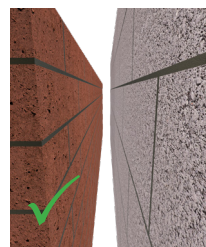
The cavity width is accurate and the cavity insulation has been cut back where the barrier will be located



All corners and joints are tightly butt jointed. Barriers are not bent around corners.



Excess polythene is remove from joints



The cavity is clear from debris

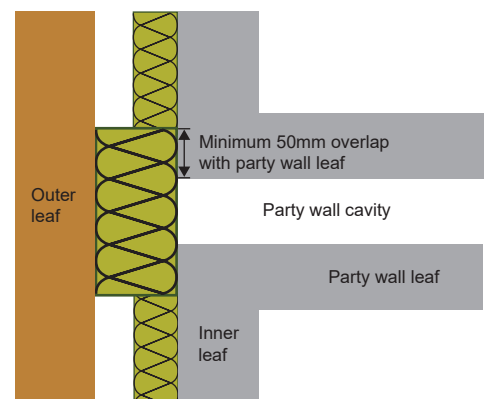


Green horizontal barrier shown; the above points can be applied to all installations regardless of size or orientation.

Party Wall Junction

ARC's Party Wall Cavity Stop Sock is designed for use at the party wall junction; fitted in the external wall cavity, with a minimum 50mm overlap either side of the party wall cavity. At 250mm wide, ARC's PWCSS range is suitable for use with party wall cavities up to 150mm wide.

These wider barriers do not require a compression fit, and are supplied with a 5mm compression to allow for site anomalies.



CAVITY STOP SOCK



Product & Packaging Specification

| Product Code | Suitable for Cavity Width | Sleeve Colour | Masonry Fire Performance | | Compression Required | Dimensions | Lengths per pack | Packs per pallet |
|--------------|---------------------------|---------------|--------------------------|------------|----------------------|--------------------|------------------|------------------|
| | | | Fire Integrity | Insulation | | | | |
| CSS50 | 50mm | Red | 4 hrs | 15 mins | 15mm | 65 x 65 x 1200mm | 40 | 12 |
| CSS75 | 75mm | Red | 4 hrs | 15 mins | 15mm | 90 x 75 x 1200mm | 35 | 12 |
| CSS80 | 80mm | Green | 4 hrs | 15 mins | 20mm | 100 x 100 x 1200mm | 24 | 10 |
| CSS85 | 85mm | Green | 4 hrs | 15 mins | 20mm | 105 x 100 x 1200mm | 24 | 10 |
| CSS90 | 90mm | Green | 4 hrs | 15 mins | 20mm | 110 x 100 x 1200mm | 20 | 10 |
| CSS95 | 95mm | Green | 4 hrs | 15 mins | 20mm | 115 x 100 x 1200mm | 20 | 10 |
| CSS100 | 100mm | Green | 4 hrs | 15 mins | 20mm | 120 x 100 x 1200mm | 20 | 10 |
| CSS105 | 105mm | Green | 4 hrs | 15 mins | 10mm | 120 x 120 x 1200mm | 15 | 10 |
| CSS110 | 110mm | Green | 4 hrs | 15 mins | 10mm | 120 x 120 x 1200mm | 15 | 10 |
| CSS115 | 115mm | Lt Blue | 4 hrs | 15 mins | 10mm | 130 x 120 x 1200mm | 15 | 10 |
| CSS120 | 120mm | Lt Blue | 4 hrs | 15 mins | 10mm | 135 x 120 x 1200mm | 15 | 10 |
| CSS125 | 125mm | Lt Blue | 4 hrs | 15 mins | 10mm | 135 x 120 x 1200mm | 15 | 10 |
| CSS130 | 130mm | Lt Blue | 4 hrs | 15 mins | 10mm | 140 x 120 x 1200mm | 15 | 10 |
| CSS135 | 135mm | Lt Blue | 4 hrs | 15 mins | 10mm | 145 x 120 x 1200mm | 15 | 10 |
| CSS140 | 140mm | Lt Blue | 4 hrs | 15 mins | 10mm | 150 x 120 x 1200mm | 15 | 10 |
| CSS145 | 145mm | Lt Blue | 4 hrs | 15 mins | 10mm | 155 x 120 x 1200mm | 15 | 8 |
| CSS150 | 150mm | Lt Blue | 4 hrs | 15 mins | 10mm | 160 x 120 x 1200mm | 15 | 8 |
| CSS155 | 155mm | Lt Blue | 2 hrs | 15 mins | 10mm | 165 x 150 x 1200mm | 12 | 8 |
| CSS160 | 160mm | Lt Blue | 2 hrs | 15 mins | 10mm | 170 x 150 x 1200mm | 12 | 8 |
| CSS165 | 165mm | Lt Blue | 2 hrs | 15 mins | 10mm | 175 x 150 x 1200mm | 10 | 8 |
| CSS170 | 170mm | Lt Blue | 2 hrs | 15 mins | 10mm | 180 x 150 x 1200mm | 10 | 8 |
| CSS175 | 175mm | Lt Blue | 2 hrs | 15 mins | 10mm | 185 x 150 x 1200mm | 9 | 8 |
| CSS180 | 180mm | Lt Blue | 2 hrs | 15 mins | 10mm | 190 x 150 x 1200mm | 9 | 8 |
| CSS185 | 185mm | Red | 2 hrs | 15 mins | 10mm | 195 x 150 x 1200mm | 9 | 8 |
| CSS190 | 190mm | Red | 2 hrs | 15 mins | 10mm | 200 x 150 x 1200mm | 9 | 8 |
| CSS195 | 195mm | Red | 2 hrs | 15 mins | 10mm | 205 x 150 x 1200mm | 9 | 8 |
| CSS200 | 200mm | Red | 2 hrs | 15 mins | 10mm | 210 x 150 x 1200mm | 8 | 10 |
| CSS225 | 225mm | Black | 2 hrs | 15 mins | 10mm | 235 x 200 x 1200mm | 3 | 16 |
| CSS250 | 250mm | Black | 2 hrs | 15 mins | 10mm | 260 x 200 x 1200mm | 4 | 12 |
| CSS275 | 275mm | Black | 2 hrs | 15 mins | 10mm | 285 x 200 x 1200mm | 4 | 12 |
| CSS300 | 300mm | Black | 2 hrs | 15 mins | 10mm | 310 x 200 x 1200mm | 4 | 10 |

ARC Party Wall Cavity Stop Socks: vertical cavity fire barrier at the party wall junction

| | | | | | | | | |
|----------|-------|-------|-------|-------|----------|--------------------|----|----|
| PWCSS50 | 50mm | Red | 4 hrs | 4 hrs | Friction | 55 x 250 x 1200mm | 12 | 10 |
| PWCSS75 | 75mm | Red | 4 hrs | 4 hrs | Friction | 80 x 250 x 1200mm | 10 | 10 |
| PWCSS100 | 100mm | Red | 4 hrs | 4 hrs | Friction | 105 x 250 x 1200mm | 8 | 10 |
| PWCSS125 | 125mm | Red | 4 hrs | 4 hrs | Friction | 130 x 250 x 1200mm | 6 | 10 |
| PWCSS150 | 150mm | Red | 4 hrs | 4 hrs | Friction | 155 x 250 x 1200mm | 6 | 10 |
| PWCSS175 | 175mm | Red | 4 hrs | 3 hrs | Friction | 180 x 250 x 1200mm | 4 | 10 |
| PWCSS200 | 200mm | Red | 4 hrs | 3 hrs | Friction | 205 x 250 x 1200mm | 4 | 10 |
| PWCSS225 | 225mm | Black | 4 hrs | 3 hrs | Friction | 230 x 250 x 1200mm | 4 | 10 |
| PWCSS250 | 250mm | Black | 4 hrs | 3 hrs | Friction | 255 x 250 x 1200mm | 4 | 10 |
| PWCSS275 | 275mm | Black | 4 hrs | 3 hrs | Friction | 280 x 250 x 1200mm | 2 | 12 |
| PWCSS300 | 300mm | Black | 4 hrs | 3 hrs | Friction | 305 x 250 x 1200mm | 2 | 12 |

Can't find your size? ARC Cavity Stop Sock can be manufactured to suit any cavity width up to 300mm, including any intermediary sizes not listed above. **Call our technical experts on 0113 252 9428 to discuss your requirements.**

CAVITY STOP SOCK



Key Stats

| | |
|---------------------------|--|
| Length supplied | 1.2m |
| Third-party certification | Certifire CF5403 |
| Insulation | Non-combustible rockfibre mineral wool |
| Thermal conductivity | 0.037W/mK |
| Fire rating | Up to 4 hours |

| | |
|--------------------------|------------------------|
| Insulation performance | Minimum 15 mins |
| Test standard | BS 476 Part 20 |
| Construction type | Masonry |
| Orientation | Vertical or horizontal |
| Robust Detail compliance | E-WM 1-21 |

Fire Properties

ARC Cavity Stop Sock has been fire tested in accordance with the principles given in BS 476: Part 20: 1987, achieving up to four hours fire integrity within a masonry construction.

ARC Cavity Stop Sock is certificated by Certifire, a third-party accreditation scheme from Exova Warrington Certification. Certifire assures architects, specifiers, contractors and building owners that a correctly installed product will perform as expected.

Certifire Certificate of Approval no. CF5403.

Non-Standard Applications

Where usage falls outside of the certificated scope, for example when used with external cladding, or with an internal metal frame system, performance of the fire barrier will depend heavily upon the structural integrity and fire performance of the surrounding construction.

Specifiers must ensure all construction elements that make up part of the internal or external leaf of the wall, including support systems, are suitable for use with a cavity fire barrier for the length of fire integrity and insulation required. Particular attention must be paid to any possible deflection or distortion which could cause gaps to form between the construction and any fire barrier installed.

In the event of a fire, ARC Building Solutions Ltd cannot accept liability for failure where usage is outside of the standard application, including but not limited to, where deflection or distortion has allowed gaps to form around the barrier, or where the barrier is not fitted in accordance with the manufacturer's guidelines.

Standards

ARC Cavity Stop Sock is manufactured using rockfibre mineral wool which achieves a fire classification of Euroclass A1 as defined in BS EN 13501-1, and conforms to BS EN 13162 and EN16001 Energy Management Systems.

ARC's rockfibre mineral wool insulation has a thermal conductivity of 0.037W/mK.

Storage and Packaging

ARC Cavity Stop Sock is supplied in polythene packs which are designed for transporting and protecting the products. It is not recommended that the packs are stored in direct sunlight. When storing the barriers for longer periods of time it is recommended that the product should be stored indoors, or under cover.

Environment

No CFCs or HCFCs are involved in the manufacturing process of ARC's rockfibre mineral wool insulation. The material presents no known threat to the environment and is classed as ODP and GWP zero.

ARC Cavity Stop Sock has a Green Guide rating of A+.

Health and Safety

ARC Building Solutions has an approved Health and Safety Policy and is committed to working and supplying products safely. ARC's rockfibre mineral wool is not classed as a possible human carcinogen. We have assessed products as required by Substances Hazardous to Health Regulations (COSHH). An ARC COSHH data sheet is available and can be downloaded from ARC's website.

Any information provided within this document is intended for guidance only. Expert technical advice should be sought before specification or installation of any product. It is of particular importance to ensure that any fire barrier or fire stopping product is tested for use with the exact application intended. ARC Building Solutions Ltd cannot accept liability for failure where usage is outside of the standard application, including but not limited to, where deflection or distortion has allowed gaps to form around the barrier, or where the barrier is not fitted in accordance with the manufacturer's guidelines.

© 2020 ARC Building Solutions Ltd. ARC and T-Barrier are registered trademarks of ARC Building Solutions Ltd.



Assessed to ISO 9001 & ISO 14001
BRE Certificate No. 1227